

# Digital Food Safety

Automated HACCP Logs &  
Temperature Monitoring

**blueRover**

# Affordable Food Safety Traceability. Finally.

Automate your daily HACCP and Pre-Shipment processes for complete facility food safety visibility for RTE and NRTE products.

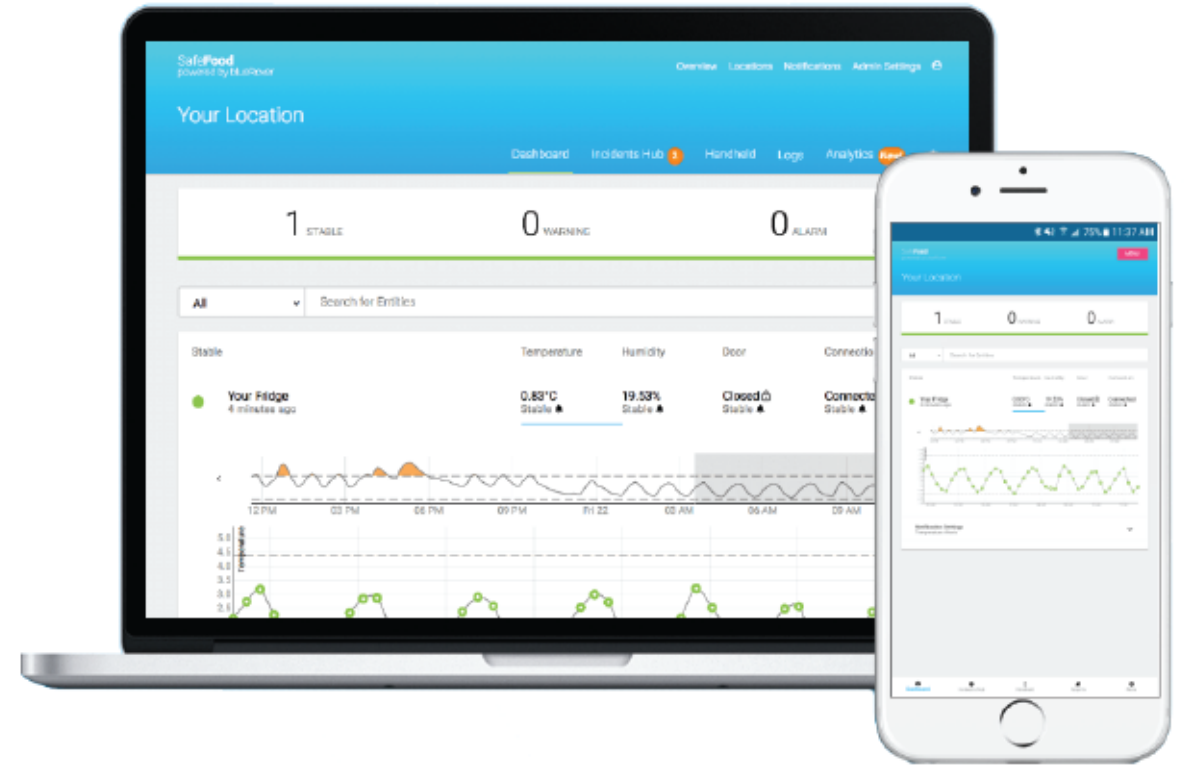


- ✓ **Product Temperature Tracking**
- ✓ **Zone Monitoring**
- ✓ **Mobile Monitoring**

# Automated Monitoring

Designed to provide monitoring and analytics from multiple pieces of equipment, all within one mobile platform. Users can monitor, track, and automate food safety efforts providing peace of mind for regulatory compliance.

Actionable alerts are sent to your team when food temperature, product cool down stages, or air conditions in storage units go out of compliance. Continuous temperature monitoring enables consistent and accurate HACCP logs with improved labour efficiencies.





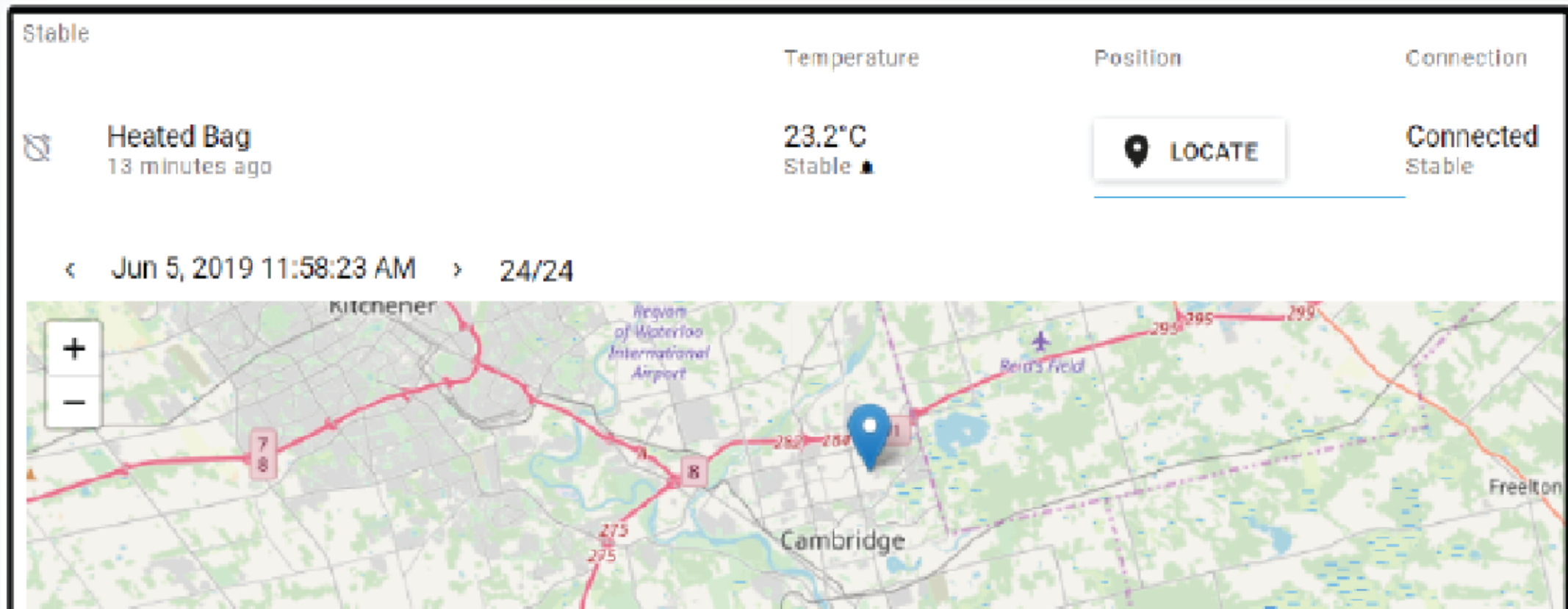
# Automated Mobile Monitoring

- ✓ Accurate temperature of your remote trailers in real-time, including location data
- ✓ National trailer monitoring in real-time, without staff intervention
- ✓ Fully-battery operated devices that do not require charging or maintenance
- ✓ Fast and easy installation
- ✓ Bumper to bumper solution with support, connectivity, and warranty
- ✓ API accessibility to interface with existing internal software platforms



# Real-time remote temperature and location reports

Get information from all remote or mobile vehicles in live stream. End-to-end food safety assurance.



# Never worry about Food Safety compliance again.



## Support

Not sure why your temperature isn't holding? Our Food Safety Experts are available by phone or email, and are happy to help.



## Training

Need to train your staff on how to manage your HACCP? We have a library of videos designed to make Food Safety easy.



## Warranty

We'll never leave you in the lurch. We replace any failing equipment quickly to avoid service interruptions.



# blueRover

**We'd love to hear from you!**

hello@bluerover.ca

+1.855.682.2874

